

NjordLINK

New Product Introduction

US Dealer & OEM Partner
Information November 2024



NMEA 2000 to Njord Cloud Server

Digital Yacht NjordLINK

Part Number: ZDIGNJORD
UPC: 703791696758
SRP ex vat: \$199.95
Availability: November 2024

TEL - 978 277 1234

www.digitalyachtamerica.com

NjordLINK - Introduction



In today's connected world, your house, car and smart devices ping data to the cloud for monitoring, control and peace of mind – and even diagnostics such as service requirements or software updates. But how about your boat?

Now there's a solution - NjordLINK takes an innovative, universal and low-cost approach – yet still delivers the best in encryption, privacy and a new generation of applications.

NjordLINK brings **ALL** your boat's NMEA 2000 data to the secure Njord cloud and opens your boat to the world of Njord apps and connectivity. It also functions with any format of internet connection - from wifi hotspot, 4G/5G on board systems or Starlink.

It's a new concept in marine technology so you'll see the platform quickly evolve - but start thinking about boating in a different way from smart anchoring, historical analysis and predictive maintenance for engines and advanced AI. Literally, if you think it, the Njord cloud can do it!

It doesn't need expensive, custom sensors as it connects to industry standard NMEA 2000 systems and utilises that data to give you granular information with regular updates as you decide.

Plus! NjordLINK is bi-directional so cloud apps can send data back to the boat. For instance – electrical switching, messaging or alerting.

Welcome to NjordLINK and the Njord cloud



“NjordLINK will connect to any NMEA 2000 based network. It ships with an integrated drop cable so it's ready to just “T” into the network and it's also powered directly from the NMEA 2000 backbone so fits in seconds.”

NjordLINK – Key Features



- Connect your NMEA 2000 devices and network to the cloud and take advantage of remote monitoring, historical analysis, new applications and AI thanks to Njord cloud
- **Universal** - Fits to any NMEA 2000 system and brings ALL your boat data to the Njord platform. NjordLINK will connect to any internet solution you have on board – hotspot, 4G/5G system or Starlink/satellite
- **Simple Install** - Use the NjordLINK app to set up your cloud service and account
- **Secure** – End to end encrypted data ensures your privacy
- **Applications** - Rethink boating with apps such as AnchorSafe and 100s more to come
- **Boat Owners** - Peace of mind 24x7 monitoring of your boat and next generation navigation and utility applications
- **Developers** - App development made easy with open-source library and easy coding
- **Boat Builders** - Fit to every boat and create your dedicated platform of connected boats for exceptional service capability
- **Equipment Manufacturers** - Bring your systems to the cloud for remote diagnostics, updates and applications



NjordLINK - Installation



NjordLINK is simple to install

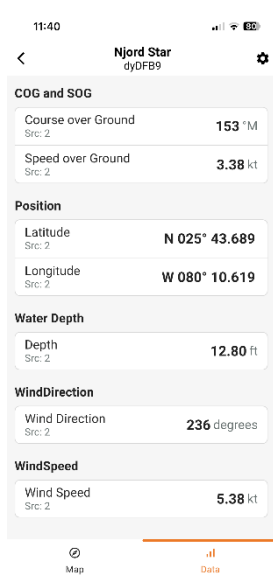
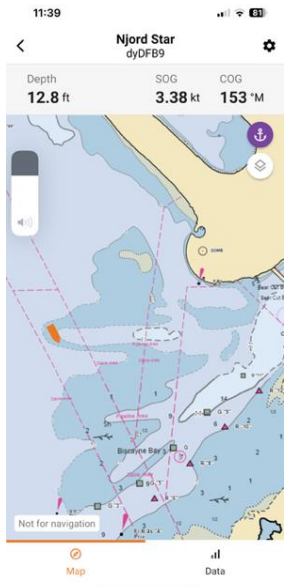
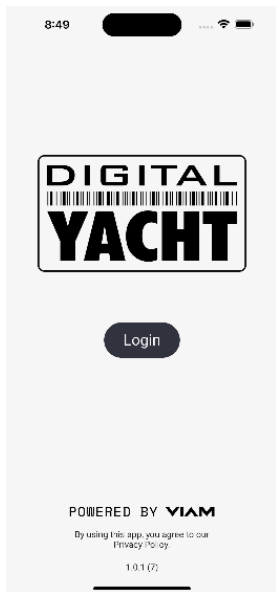
- Fits in seconds – just “T” into the NMEA 2000 backbone and it’s self-powered from the network so no other connections required
- NjordLINK creates a local wifi hotspot so you can configure using your phone or tablet and then connect to your boat’s internet network
- Any internet connection is fine from a simple phone or mifi hotspot, a dedicated 4G/5G router or a Starlink/satellite system – there’s no need for an additional or proprietary data plan
- NjordLINK reliably gets a connection to the cloud whenever available and reconnects seamlessly if a connection is lost



The NjordLINK Configuration App



The NjordLINK app, free on your app store, gets your account created and the NjordLINK device connected in seconds.



The app provides a simple chart and data display page showing the boat's current position, course, speed and depth information from your NMEA 2000 network so you can always get reassurance of your boat's current status.

The data display provides additional information showing which NMEA 2000 device is providing data

As apps develop, you'll be able to access them via this platform or via the web

Njord Cloud & Apps



The Njord Cloud is the heart of the system – it's powered by www.viam.com – a leading provider of secure cloud, AI, IOT and robotics.

Unlike many systems, your boat data is end to end encrypted and you can decide who has access from friends and family, fellow boaters or technicians and service agents.

The basic cloud account is free, forever, for life so you'll always be able to check on your boat's position and current navigation status.

Add PowerView™ electrical monitoring or EngineView™ propulsion displays for just 99c/month or have BoatVault™, a revolving 12 month total boat history for \$9.99/month (*)

Take a look too at the new Anchorsafe™ app which allows you to set an anchor alert based on an advanced algorithm looking at position, course, speed, depth and anchor chain/scope to optimise the alert radius – you can be enjoying dinner ashore and get notified by message of any impending issues.

* Check our website for the fast-evolving range of apps and plans

NjordLINK Sample Apps For Boating



NjordLINK App	Functionality	Price
NjordLINK	NjordLINK Cloud Account setup with basic boat monitoring of current position and current nav status (course, speed and depth)	Free: For ever, for life!
NjordLINK PowerVIEW	View real time data such as multiple battery bank status, voltage, current in/out, state of charge, AC generator and shore power voltage	99c/month
NjordLINK EngineVIEW	View real time data from your engine – RPM, temperature, pressure and diagnostic fault codes. Plus fuel flow, tank levels and range	99c/month
NjordLINK TankVIEW	View real time data from grey, black and fresh water tank level sensors. Use your phone to watch filling in real time to prevent unwanted spills	99c/month
NjordLINK BoatVAULT	Historical 12 months revolving data with developer or advanced user pack for data queries. Include PowerView, TankView & EngineView	\$9.99/month
NjordLINK AnchorSAFE	Set an anchor alert based on an advanced algorithm looking at position, course, speed, depth and anchor chain/scope to optimise the alert radius – you can be enjoying dinner ashore and get notified by message of any impeding issues	\$9.99/month
NjordLINK EnviroSENSE	Share your boat depth, wind, temp and AIS data to help the academic and environmental community build a better model of coastal, ocean and pollution issues	Free: For ever, for life!

Njord For Boat Builders



Regardless if you build 1 or 1000 boats per year, every OEM gets benefits from on board data. NjordLINK and NjordCloud make seamless connectivity, historical data and analytics a reality – and bring security for your clients too.

We can quickly and inexpensively develop a custom app for your brand to introduce NjordCloud to your fleet. Your installation systems don't change, fit and forget and connect your customer's boats to the cloud.

It's also useful for remote diagnostics and the platform can be used for over the air updates.

Reach out to our team at njord@digitalyachtamerica.com for options

Njord For Developers

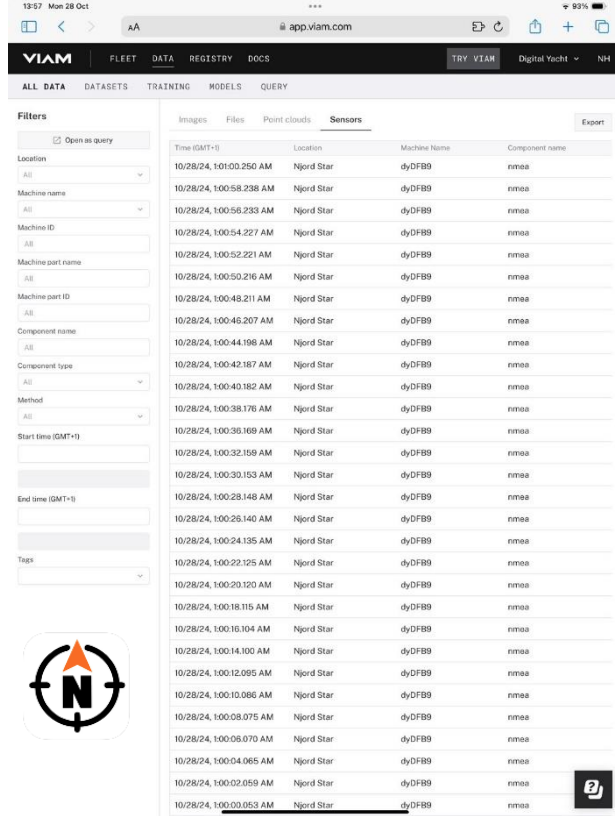
The Njord cloud stores all the boat's NMEA data and makes developing apps or generating historical information as simple as possible. Easily generate a query - for instance, tell me if my boat has been in water less that 6ft, graph my engine temperature for last 40 hrs, create a logbook for past 6 months.

If you think it, Njord Cloud can create it.

Get access to instrument, GPS, electrical, tank, engine, AIS data etc for historical and predictive analysis. The Njord cloud can also process video data

The BoatVault app stores unlimited NMEA 2000 historical data for a rolling 12 month period for just \$9.99 month*

* Check our website for the fast-evolving range of apps and plans



The screenshot shows the Njord web application interface. At the top, there's a navigation bar with 'VIAM' logo and menu items: FLEET, DATA, REGISTRY, DOCS. A 'TRY VIAM' button and 'Digital Yacht' dropdown are also visible. Below the navigation, there are tabs for 'ALL DATA', 'DATASETS', 'TRAINING', 'MODELS', and 'QUERY'. The main content area is divided into 'Filters' on the left and a data table on the right. The 'Filters' section includes fields for Location, Machine name, Machine ID, Machine part name, Machine part ID, Component name, Component type, Method, Start time (GMT+1), End time (GMT-1), and Tags. The data table is titled 'Sensors' and has columns for Time (GMT+1), Location, Machine Name, and Component name. It displays a list of sensor readings for a boat named 'Njord Star' on 10/28/24.

Time (GMT+1)	Location	Machine Name	Component name
10/28/24, 1:01:00.250 AM	Njord Star	dyDFB9	rmaa
10/28/24, 1:00:58.238 AM	Njord Star	dyDFB9	rmaa
10/28/24, 1:00:56.233 AM	Njord Star	dyDFB9	rmaa
10/28/24, 1:00:54.227 AM	Njord Star	dyDFB9	rmaa
10/28/24, 1:00:52.221 AM	Njord Star	dyDFB9	rmaa
10/28/24, 1:00:50.216 AM	Njord Star	dyDFB9	rmaa
10/28/24, 1:00:48.211 AM	Njord Star	dyDFB9	rmaa
10/28/24, 1:00:46.207 AM	Njord Star	dyDFB9	rmaa
10/28/24, 1:00:44.198 AM	Njord Star	dyDFB9	rmaa
10/28/24, 1:00:42.187 AM	Njord Star	dyDFB9	rmaa
10/28/24, 1:00:40.182 AM	Njord Star	dyDFB9	rmaa
10/28/24, 1:00:38.176 AM	Njord Star	dyDFB9	rmaa
10/28/24, 1:00:36.169 AM	Njord Star	dyDFB9	rmaa
10/28/24, 1:00:32.159 AM	Njord Star	dyDFB9	rmaa
10/28/24, 1:00:30.153 AM	Njord Star	dyDFB9	rmaa
10/28/24, 1:00:28.148 AM	Njord Star	dyDFB9	rmaa
10/28/24, 1:00:26.140 AM	Njord Star	dyDFB9	rmaa
10/28/24, 1:00:24.135 AM	Njord Star	dyDFB9	rmaa
10/28/24, 1:00:22.125 AM	Njord Star	dyDFB9	rmaa
10/28/24, 1:00:20.120 AM	Njord Star	dyDFB9	rmaa
10/28/24, 1:00:18.115 AM	Njord Star	dyDFB9	rmaa
10/28/24, 1:00:16.104 AM	Njord Star	dyDFB9	rmaa
10/28/24, 1:00:14.100 AM	Njord Star	dyDFB9	rmaa
10/28/24, 1:00:12.095 AM	Njord Star	dyDFB9	rmaa
10/28/24, 1:00:10.086 AM	Njord Star	dyDFB9	rmaa
10/28/24, 1:00:08.075 AM	Njord Star	dyDFB9	rmaa
10/28/24, 1:00:06.070 AM	Njord Star	dyDFB9	rmaa
10/28/24, 1:00:04.065 AM	Njord Star	dyDFB9	rmaa
10/28/24, 1:00:02.059 AM	Njord Star	dyDFB9	rmaa
10/28/24, 1:00:00.053 AM	Njord Star	dyDFB9	rmaa



FAQs



What is the password for my NjordLINK?

Please refer to the quick connect guide [HERE](#)

Where should I install NjordLINK?

NjordLINK requires a NMEA 2000 connection and also needs to wirelessly link to the boat's internet network so position close to the internet router in a protected area

Is my data secure?

Yes. NjordLINK uses secure end to end encryption and you can decide who has access to your data online

How do I reset a NjordLINK?

Press and hold the reset button for 10 seconds. You'll see the LEDs illuminate in sequence and then reverse the sequence. Once the sequencing is complete, release the reset button and NjordLINK will reboot and be returned to factory settings

Do I need internet connectivity for NjordLINK to function?

Yes – NjordLINK has to deliver the boat data to the cloud so you need an internet connection. It doesn't consume much bandwidth and we automatically reconnect if the connection drops. A simple phone hotspot, wifi, 4G/5G connection or satellite service such as Starlink can be used

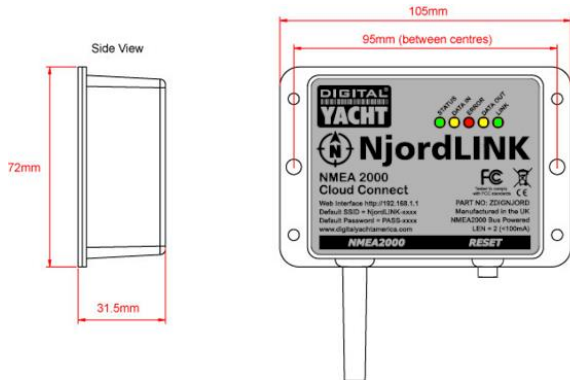
How can I become a developer?

Building apps with Njord cloud is easy using free APIs and scripts to quickly parse and query data. Contact njord@digitalyachtamerica.com and get involved in our webinars online

As a boatbuilder, can you develop a custom app?

Yes – we can quickly and affordably develop a custom app. You can decide on how data is displayed and how to work with historical data for analysis. Contact njord@digitalyachtamerica.com

NjordLINK – Specs & Dimensions



Specifications

Overall Size	105 x 72mm
Weight (inc packaging)	200g
Power	Via NMEA 2000 bus. 0.8m power data cable included
LEN	2
Connectivity	NMEA 2000 & 802.11 b/g/n WPA2/3 Protected wireless interface

Ordering Information



NjordLINK NMEA 2000 to Cloud Server	Description
Manufacturer Description Part Number	DIGITAL YACHT NJORDLINK NMEA 2000 TO CLOUD SERVER ZDIGNJORD
UPC	703791696758
Price - Standard dealer discounts apply	\$199.95
Key features	<ul style="list-style-type: none">• The gateway to connect your boat to the cloud for remote monitoring, security, tracking, exciting apps and diagnostics<ul style="list-style-type: none">• Easy installation and setup with dedicated app• Connects to any NMEA 2000 network including Garmin, Navico (B&G, Simrad, Lowrance), Maretron, Raymarine, Humminbird, Furuno etc<ul style="list-style-type: none">• Industry leading secure, encrypted and private connection• Connect with any internet connection from mobile phone hotspot, 4G/5G systems and satellite such as Starlink
Shipping weight Commodity code Country of origin More information	0.2kg 90148050 UK www.digitalyachtamerica.com or order at sales@digitalyachtamerica.com