

AIS Software Upgrade Appendix

SC500A Combo Chart Plotter and AIS



1. Introduction

The Digital Yacht SC500A recently had a software update to improve the AIS functionality. This appendix provides information on how to use the new features.

i The following features are only available on SC500A (Combo AIS) and SC500 (Plotter Only) units if they are running software version V16.31.00R. If you have an older version of software and would like to get these new features, please contact support@digitalyacht.co.uk

2. New Features

A new AIS List is now available that can be accessed from the Page Menu see Fig 1. Press the “PAGE” key on the plotter, then use the cursor control pad to select the “AIS Report” option and press the “ENTER” key to go to this page.

The AIS Report (Fig 2) shows a complete list of all of the AIS targets currently within range. By default they are listed showing the most dangerous targets based on their “Closest Point of Approach” (CPA) range.

By pressing the “SORT” soft key, you can choose to sort by;

- 1) Name
- 2) MMSI
- 3) Call Sign
- 4) SOG
- 5) COG
- 6) CPA
- 7) TCPA (time to closest point of approach)

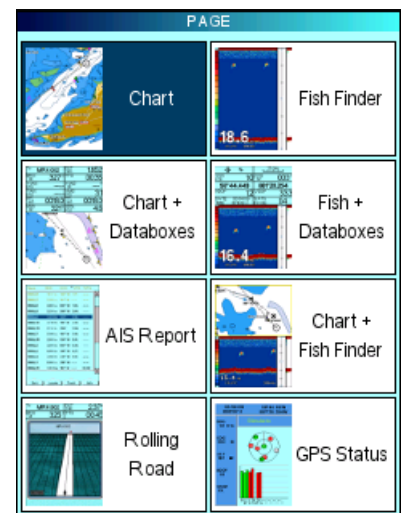


Figure 1

Targets shown in Red are targets that have triggered the CPA or TCPA alarm.

For each AIS target in the list, you can select it using the cursor control pad and then click on the following soft keys for additional actions;

- “Locate” – centres the AIS target on the chart (Fig 3)
- “Track” – records the positions of the target (“snail trail”)
- “Info” – displays additional information about the target (Fig 4)

You can track up to ten AIS targets and set the track recording and colour in the Setting>Devices>AIS>AIS Track List page (Fig 5).

To stop tracking a target, select the target in the AIS Report and press the “Track” soft key again.

Name	SOG	COG	CPA	TCPA
SIMUL11	2.3 Kts	284° M	6.22 N.	---
SIMUL1	2.1 Kts	152° M	0.59 N.	06:51
SIMUL13	0.0 Kts	358° M	1.44.	04:28
SIMUL14	1.0 Kts	148° M	2.08 N.	---
SIMUL2	0.0 Kts	358° M	2.36 N.	22:28
SIMUL7	2.8 Kts	315° M	2.51 N.	12:10
SIMUL12	4.9 Kts	344° M	5.69 N.	---
SIMUL3	3.3 Kts	316° M	6.03 N.	---
SIMUL5	3.4 Kts	171° M	7.05 N.	---
SIMUL6	2.3 Kts	006° M	8.05 N.	---
SIMUL9	4.3 Kts	094° M	8.08 N.	---
SIMUL0	1.0 Kts	121° M	---	---
SIMUL4	1.0 Kts	004° M	---	---
SIMUL8	1.0 Kts	153° M	---	---

Figure 2

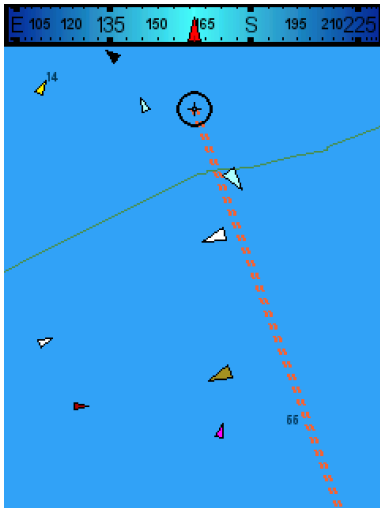


Figure 2

Full info on vessel "SIMUL5"

Type of Ship	Sailing
ROT	-12.00
SOG	3.4 Kts
Heading	094° M
Draught	9.20
IMO	100000008
Call Sign	SIMUL5
CPA	7.79 Nm
TCPA	---
Length	113
Width	15

Figure 4

N.	Description	Step Lapse	Color
1	SIMUL6	10 sec	Yellow
2	SIMUL12	10 sec	Green
3	SIMUL3	10 sec	Pink
Track Settings			
4	Description	TRACK 12	
5	Display Mode	Visible	
6	Color	Yellow	
7	Step Unit	TIME	
8	Time Step	10 sec	1 sec
9	Distance Step	0.01 N	5 sec
10	Delete All Tracks		10 sec
11	Free Points	4978 100	30 sec
12	Free Points	10 sec	1 min
13	TR ACK 12	10 sec	Yellow
14	TR ACK 13	10 sec	Black

Figure 5

On the chart display, AIS targets are now colour coded based on vessel type. Figure 6 shows the key to the different colours and symbols and if you place the cursor on an AIS Target symbol, the quick info window will appear with the basic AIS Target info (see Fig 7). If the target has triggered an alarm and is dangerous it is displayed in a red box (Fig 8).

High Speed Craft	Passenger
Cargo	Tanker
Sailing	Pleasure Craft
Search and Rescue	Port Tender
Unknown	Other
SART Active	Helicopter
AtoN or Base	

Figure 6

AIS

Name	SIMUL6
MMSI Number	100000006
Call Sign	SIMUL6
SOG	1.7 Kts
COG	141° M
CPA	6.26 Nm
TCPA	25:20
	Tanker

Figure 7

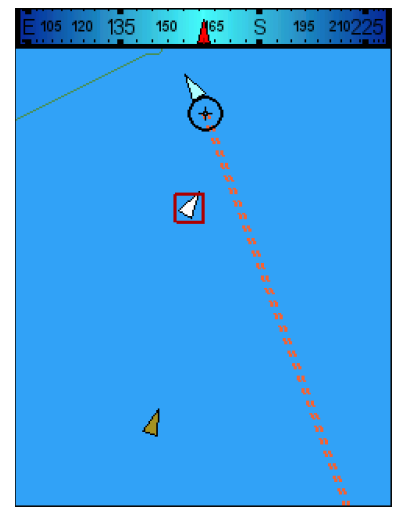


Figure 8