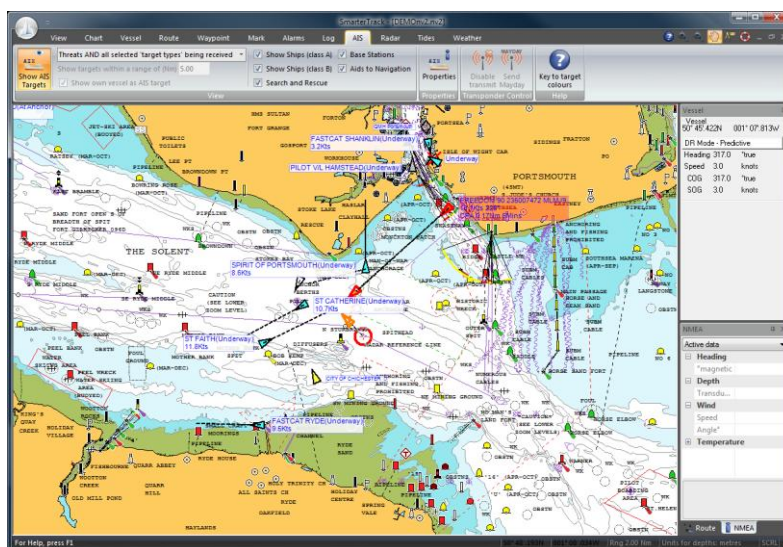


# Quick Start Guide

## SmarterTrack



## 1. Introduction

Thank you for purchasing SmarterTrack our sophisticated Navigation Software package for Windows PCs. SmarterTrack is delivered as a digital download and comes with a licence for up to two concurrent PCs. A licence key will be emailed to you with a link for the download. The licence can also be transferred to other PCs using an uninstall process. Smartertrack can be used on any PC running a Windows XP/Vista/7/8/10/11 operating system. The following Quick Start Manual will guide you through installing and configuring SmarterTrack and for more specific details of particular features, please consult the SmarterTrack Help Files that are included in the program.

## 2. Before you start

Make sure that any NMEA devices such as GPS, AIS, Instruments, etc. are connected to the PC and any drivers and software correctly installed. If you are using USB connections, then the drivers will have installed "Virtual COM Ports" and Windows will have allocated a COM Port number for each connection, which will be listed in the Windows Device Manager. It is important that you have discovered and noted the COM port numbers for each connected device, so that you can configure the devices in SmarterTrack.

You will need a licence code which you will receive via email when you purchase the software.

## 3. Installation & Activation.

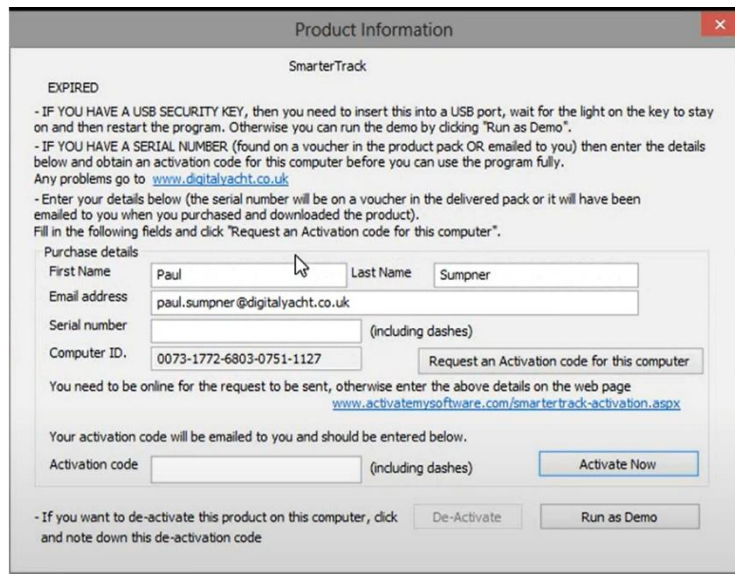
You can watch a series of installation videos on YouTube here: <https://youtu.be/NIq3ETNcqYo?si=ELrI89iH7EU6W0MV>

The SmarterTrack software is easy to install. You can download it directly from our website under Support > Downloads > Software. From there, download the SmarterTrack Full Setup files.

Next, unzip the files and double-click the Setup file. If Windows blocks the execution, you can choose to proceed with the installation anyway.

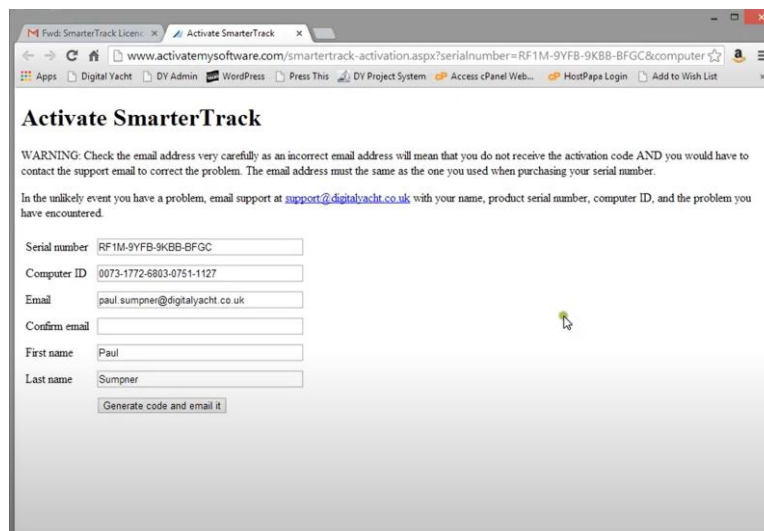
Once the installer starts, simply follow the on-screen instructions until the installation is complete.

After installation, you'll need to activate the software. Enter the serial number provided to you by email in the Serial Number tab.



The image shows a 'Product Information' dialog box for SmarterTrack. It contains instructions for activation, including a warning about USB security keys and a link to the support website. The 'Purchase details' section includes fields for First Name (Paul), Last Name (Sumpner), Email address (paul.sumpner@digitalyacht.co.uk), Serial number, and Computer ID (0073-1772-6803-0751-1127). There is a 'Request an Activation code for this computer' button. Below this, there is a section for the activation code and an 'Activate Now' button. At the bottom, there are 'De-Activate' and 'Run as Demo' buttons.

Finally, click on Request an Activation Code for this Computer. Fulfill the details and click on 'Generate Code and email it'. You will receive the activation code via email.



The image shows a web browser window displaying the 'Activate SmarterTrack' page. The URL is [www.activatemysoftware.com/smartertrack-activation.aspx?serialnumber=RF1M-9YFB-9KBB-BFGC&computerid=0073-1772-6803-0751-1127](http://www.activatemysoftware.com/smartertrack-activation.aspx?serialnumber=RF1M-9YFB-9KBB-BFGC&computerid=0073-1772-6803-0751-1127). The page includes a warning about email address accuracy and a link to support. The form fields are filled with the same information as the previous dialog box: Serial number (RF1M-9YFB-9KBB-BFGC), Computer ID (0073-1772-6803-0751-1127), Email (paul.sumpner@digitalyacht.co.uk), Confirm email, First name (Paul), and Last name (Sumpner). A 'Generate code and email it' button is at the bottom.

Please copy it and paste it to the Activation Code tab. Then, click on Activate Now, Smartertrack is now activated on your PC.

## 4. Configuring SmarterTrack

Run SmarterTrack for the first time, by clicking on the Desktop Icon that has been created or by selecting SmarterTrack from the newly created SmarterTrack program group in the Start>Programs menu. When you run SmarterTrack for the first time, you will see a Warning Window (Fig 4). This is to remind you that the NMEA data connections need to be setup, which we will configure later in this section.

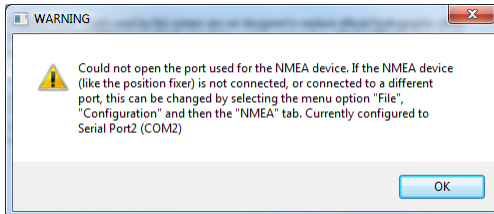


Figure 1

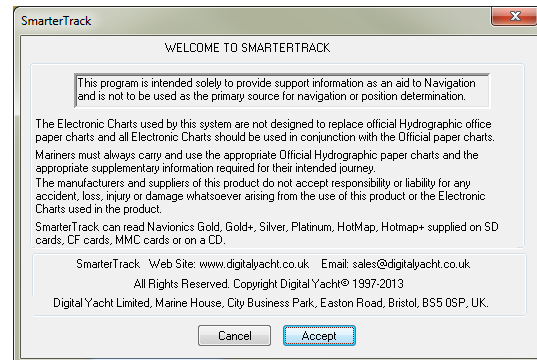


Figure 5

Click on the "OK" button and then a Welcome to SmarterTrack Window will be visible (Fig 5). Read and accept the Navionics Charts disclaimer by clicking the "Accept" button.

You will now see a screen similar to the one below.

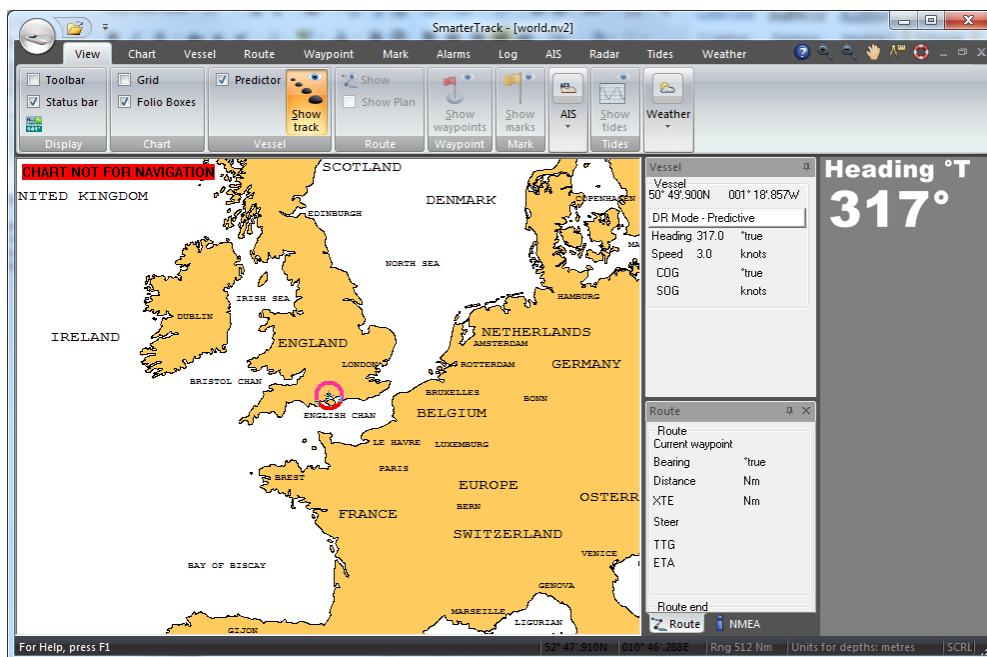


Figure 6

To configure the NMEA data, you need to click the round Boat icon in the top left hand corner of the main window, which displays the menu shown in Fig 7.

Select the "Configuration" option (spanner icon) and this will display the window shown in Fig 8.

In this window you can setup all SmarterTrack settings, but we will be concentrating on the NMEA-

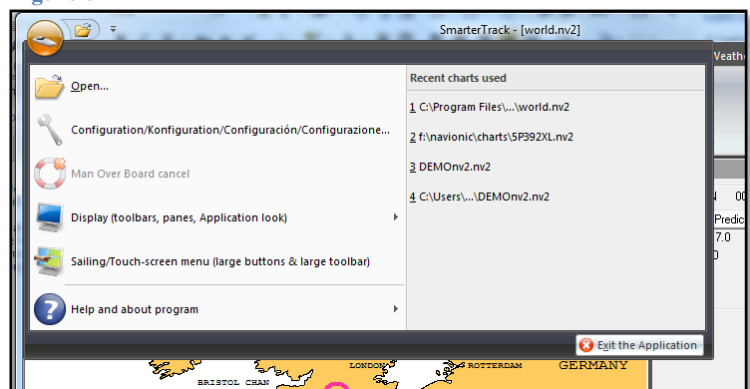


Figure 7

1 and NMEA-2 tabs which control the two NMEA ports that SmarterTrack supports.

There are lots of different configurations but we will cover the most common – GPS and AIS.

### Configuration for GPS and AIS Receiver

In the NMEA-1 tab use the default settings and select the relevant COM Port that the GPS is connected to (in this example it is COM 3) and that **“Standard NMEA (4800)”** is selected. Make sure the **“Position fixer – Primary”** setting is ticked (enabled).

This tells SmarterTrack that there is a GPS on COM port 3 and that you want to use this as the Primary source of position, in case you have two GPS units on the boat.

If there is more data coming in COM 3 than just GPS data, for example instrument data, SmarterTrack will automatically read and display this data as well.

Now click on the NMEA-2 tab and again use the default settings and select the relevant COM Port that the AIS is connected to (in this example it is COM 4) and that **“NMEA(HS) 38400”** is selected. Make sure the **“Position fixer – Secondary (Disable position fixer messages)”** setting is ticked (enabled).

If you are using wireless NMEA or NMEA2000, then you can also set up these interfaces on the NMEA-1 and NMEA-2 tabs.

For those customers wanting even more complex installations, SmarterTrack can be configured to multiplex and filter different NMEA sentences. Click on the Advanced NMEA button to bring up more options.

### Configuration for AIS Transponder

In the NMEA-1 tab use the default settings and select COM Port “None” as shown below. The reason for this, is that we will be receiving the AIS and GPS data on the COM Port we setup on the NMEA-2 tab.

Now click on the NMEA-2 tab and again use the default settings and select the relevant COM Port that the AIS data is connected to (in this example it is COM 4) and that **“NMEA(HS) 38400”** is selected.. Make sure the **“Position fixer – Primary”** setting is ticked (enabled).

Now change the device dropdown from the default which is “AIS Receiver” to “AIS Transponder” and then select one of the Digital Yacht models in the Manufacturer/Model drop down. SmarterTrack does allow the control of the Silent Mode on some Digital

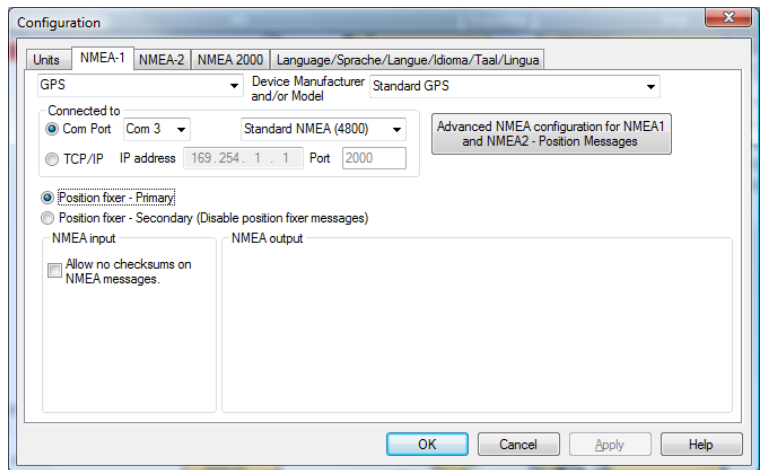


Figure 8

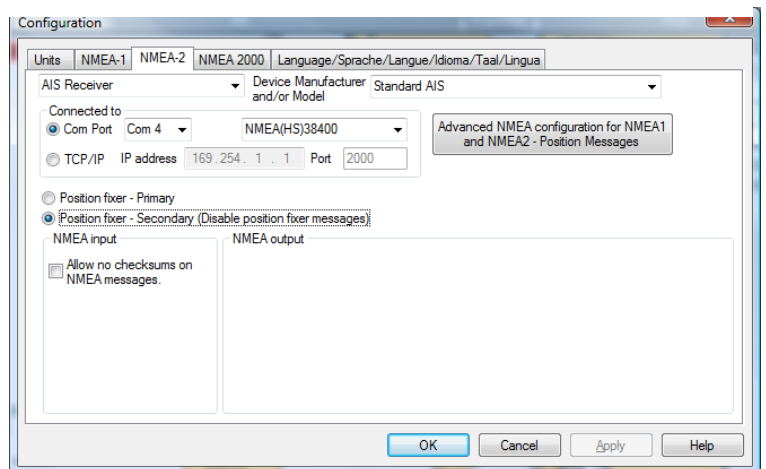


Figure 9

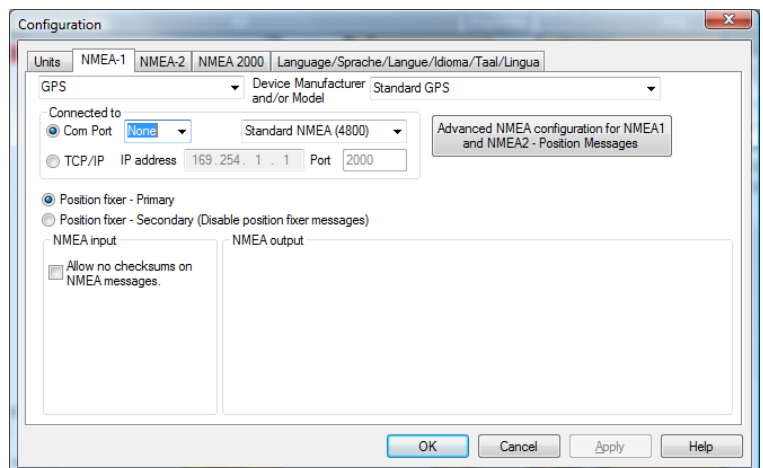


Figure 10

Yacht transponders and this is why you need to tell the program what unit is connected.

It is not critical but for our latest AIT2000, select the AIT1000 option. Currently SmarterTrack does not support the switching of Silent Mode on our AIT2000/CLB2000 transponders.

Once the NMEA-1 and NMEA-2 tabs have been set correctly, click the “OK” button and you will see the following warning displayed twice (once for each tab). Simply click “OK” each time, then exit the program and run the program again.

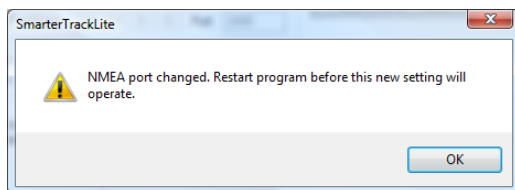
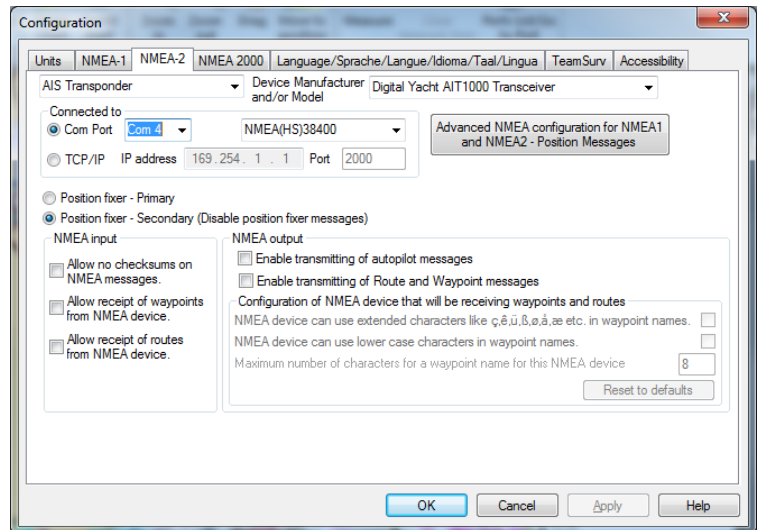


Figure 12



**IMPORTANT NOTE** – Do not select the same COM Port number in the NMEA-1 and NMEA-2 Tabs as this will cause problems in reading data and the program will not operate properly.

## 5. Loading Navionics Charts in SmarterTrack

Once the NMEA data has been configured in SmarterTrack, you should be able to see your boat's position and any AIS targets displayed on the world chart. Now we want to display the detailed Navionics charts on your cartridge/s.

From the main screen, click the Chart tab and then click the “Open Chart” icon. This will display the Load/Copy chart window shown in Fig 13.

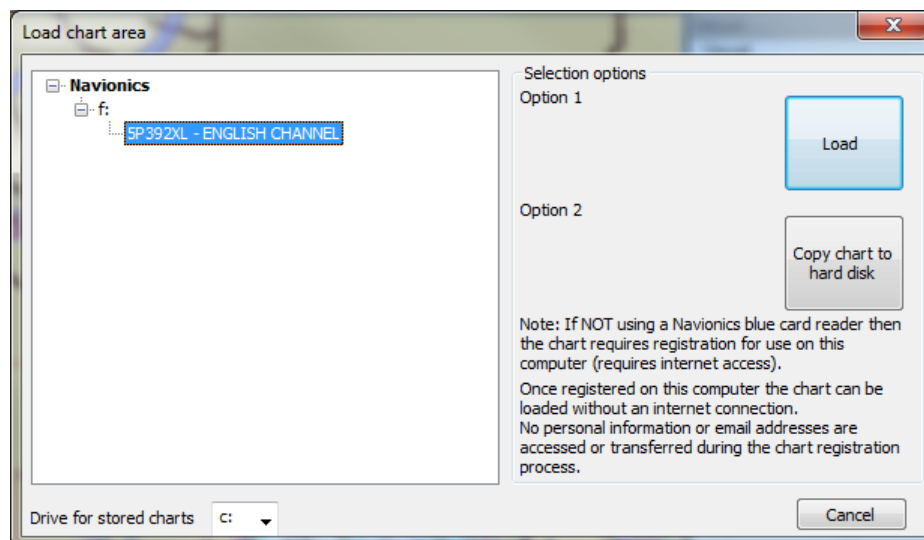


Figure 13

Assuming your card reader is connected to the USB port of your PC and a Navionics Chart Cartridge is plugged in, you should see the cartridge shown as a disk drive in this case drive F. Click the plus sign to see the cartridge Part Number and Name – in this case “SP392XL – English Channel”. Select this file and then decide if you want to Load the Cartridge in to memory, which takes up no disk space but is temporary and will need to be done each time you run SmarterTrack or if you want to Copy the Chart to your hard drive. Generally if you have enough space, copying to hard drive is recommended, as you can then access it every time you run SmarterTrack without the card reader connected.



Click the relevant button based on whether you want to copy the chart to your hard drive or not and then wait for the charts to load. Once complete you will be returned to the main window where you will see a detailed chart.

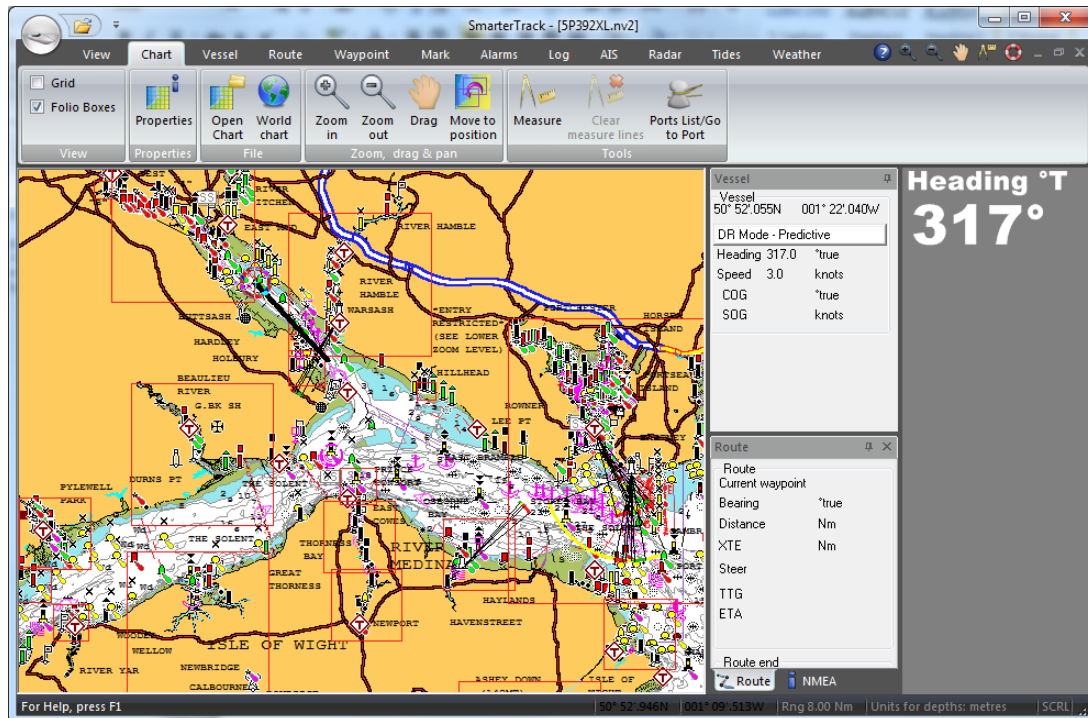


Figure 14

Your SmarterTrack is now setup and you should be able to view your Navionics charts, receive GPS, AIS and other data via NMEA. There are many other features and options in SmarterTrack, too many to cover in this Quick Start Guide, but there is a comprehensive Help Menu within SmarterTrack, simply click the F1 key to open the Help Window.

It is also worth visiting our website <http://www.digitalyacht.co.uk> for other product information and our Blog at <http://digitalyacht.net> for useful articles on all of our products. If you need specific technical support please go to <https://digitalyacht.support>