



Article Number - 00043-2012

Updated - 24th July 2013

Article applies to - AIT2000, CLB2000 and AIS200N2Net

ISSUE: Updating the firmware of an AIT2000, CLB2000 or AIS200N2Net

A new and important firmware for these two units has just been released. This new Version 1.10 fixes a pesky bug that caused the USB connection to drop out after 4-5 hours of use. Not every installation seemed to be effected by this problem and Mac/LINUX users or the many customers that only used the USB connection to program their transponder would never have detected this bug.

The problem has now been traced to the way the ST Microelectronics Virtual COM port driverV1.3.1 talked to the AIT2000/CLB2000/AIS200N2Net and to fix the problem it was necessary to release new firmware and a new Windows driver.

Anyone who uses our AIT2000/CLB2000/AIS200N2Net with a Windows PC (via the USB connection) should definitely install this update, but even if you don't fall in to this category, the update is well worth having along with the new version of proAIS2 that now provides a new internal and supply voltage check - very useful for fault finding wiring or battery problems.

SOLUTION:

The first step is to download the new V1.10 Firmware Updater from the Digital Yacht Support site by clicking on the link below;

http://www.digitalyacht.co.uk/files/AIT2000_Software_Update_V1-10.zip

At the same time, we recommend that you download the new proAIS2 software for Windows and Mac from the link below;

http://www.digitalyacht.co.uk/files/ProAIS2_V01_03_02.zip

The firmware updater requires the use of a Windows PC and as it installs the new Windows Driver, it is IMPORTANT that you run the updater on the PC that you use with the AIT2000/CLB2000/AIS200N2Net onboard the boat. If this is not practical/possible, then after updating the AIT2000/CLB2000/AIS200N2Net, install the new proAIS2 software on the boat PC and this will also install the new driver.

To install the firmware updater, apply external 12v or 24v power to the AIT2000, but remove the USB connector from the PC. Do not plug in the USB lead again until told to by the updater program.

Extract all of the files in the “AIT2000_Software_Update_V1-10.zip” file in to a new folder and then open that folder and you will see a screen similar to the one in Fig 1 below.

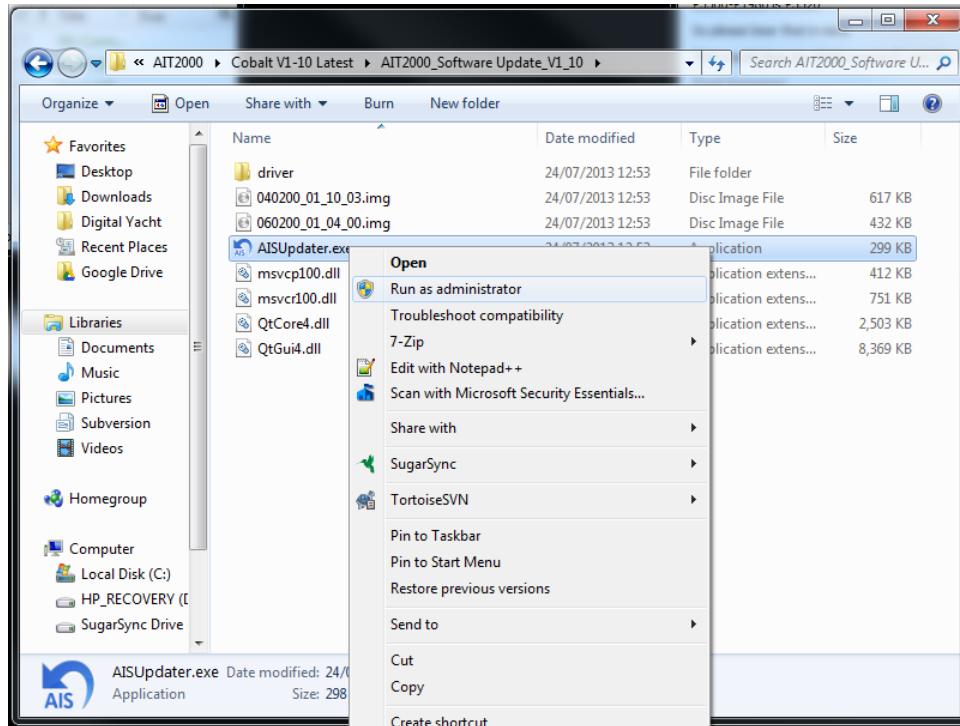


Figure 1

If you are running Windows XP, double click on the file “AISUpdater.exe” as shown highlighted in Fig 1. If you are running Windows Vista/7/8 on your PC, then right click on the same file and select “Run as administrator” from the menu. This will ensure that the User Access Control (UAC) introduced with Windows Vista will allow the program to install correctly. You should now see the screen shown in Fig 2 which will guide you through the update process.

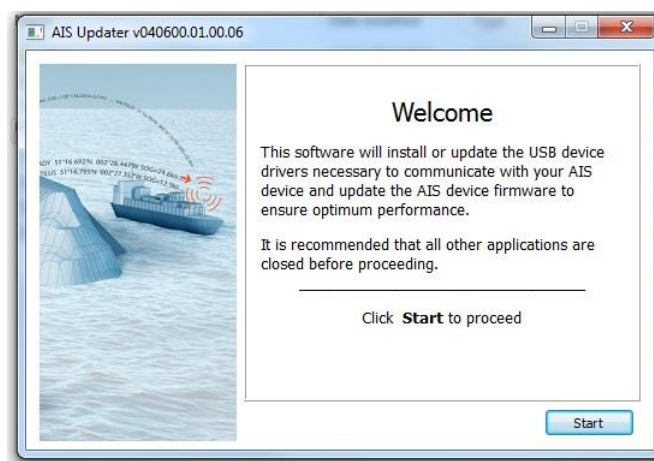


Figure 2

Read the directions and then select “Start” when you are ready to begin the process. The first stage is to update the USB drivers on the PC and the second stage is to update the software on the connected device. The software updater automatically recognises which device is connected (Class B or Receiver) and selects the appropriate device software update for you.

Once the software has been updated on both the PC and connected AIS device, the updater will confirm it has completed successfully and will ask you to close it down.

If you wish to install the new version of proAIS2, double click on the “ProAIS2_V1_03_02.zip” file that you downloaded and you will see a screen similar to the one in Fig 3.

Now double click on the “Windows” folder and you will see a screen similar to the one in Fig 4.

Again, if you are running Windows XP, double click the “Setup.exe” file or if you are running Vista/7/8 right click on the file and select “Run as Administrator” to start the proAIS2 installation.

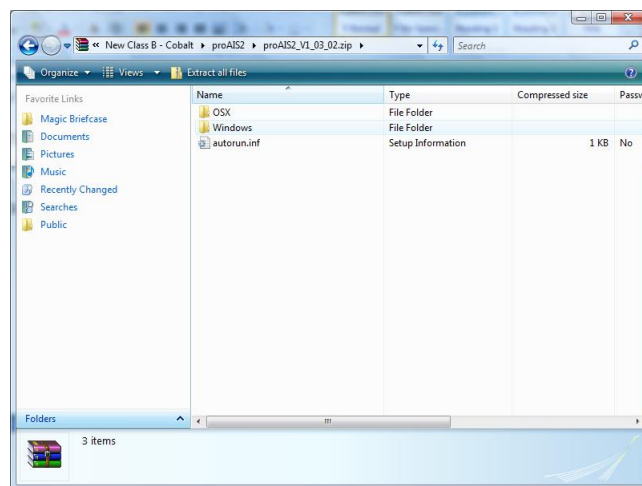


Figure 3

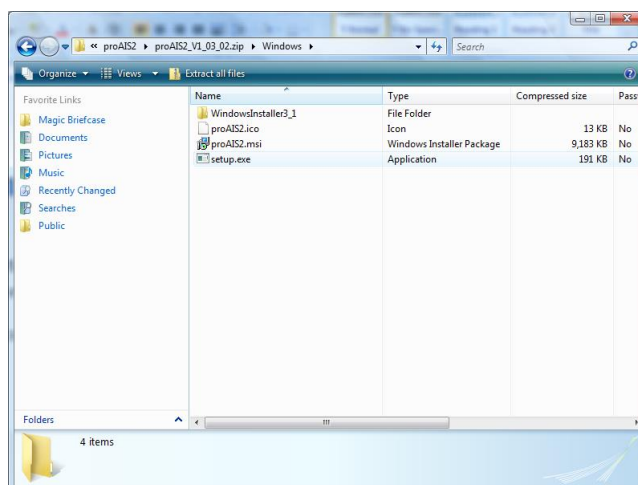


Figure 4

The proAIS2 installation will now start and you will see the window shown in Fig 5.

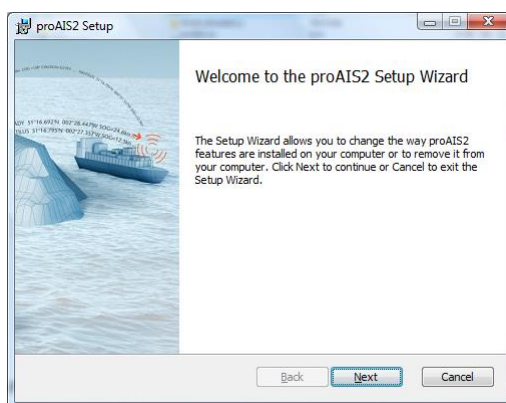


Figure 5

Click the “Next” button and then follow the on screen instructions until the installation is completed.

For further confirmation that the update has been successful, it is possible to check the software version on the Class B by connecting it proAIS2 and checking the “Diagnostics” tab. The AIS Software Version shown should be 040200.01.10.00

If you see any different software versions displayed, or if the layout of the information appears to differ from the examples shown above, then please contact support@digitalyacht.co.uk