



Article Number - 00045-2012

Date - 4th October 2012

Article applies to - WL510 long range Wi-Fi Adaptor

ISSUE: Discovering and Resetting a WL510

The WL510 Long Range Wi-Fi Adaptor is pre-configured with optimum settings for the majority of users. Occasionally we are contacted by customers reporting that they have changed these settings and inadvertently put the WL510 in to a mode where they can no longer access it through their web browser. This Tech Note explains how to reset the WL510 back to the factory defaults, either through a special Discovery tool or in extreme cases by opening the WL510 system unit and pressing the internal reset switch.

It is strongly recommended that you do not change the WL510 settings unless you are experienced in computer networking.

SOFTWARE RESET:

If you can no longer access your WL510 through the normal web browser process, as detailed in the WL510 Quick Start Manual, then you should download the WL510 Discovery Tool from the following link...

<http://www.digitalyacht.co.uk/files/WL510%20Discovery%20Tool%20V2.3.zip>

Unzip the files in this ZIP file and you will find a program called “WL510 Discovery Tool V2.3.jar” this is a Java app that can run on Windows or Mac computers. Double click the program to run it and you will see a window similar to the one in Fig 1.

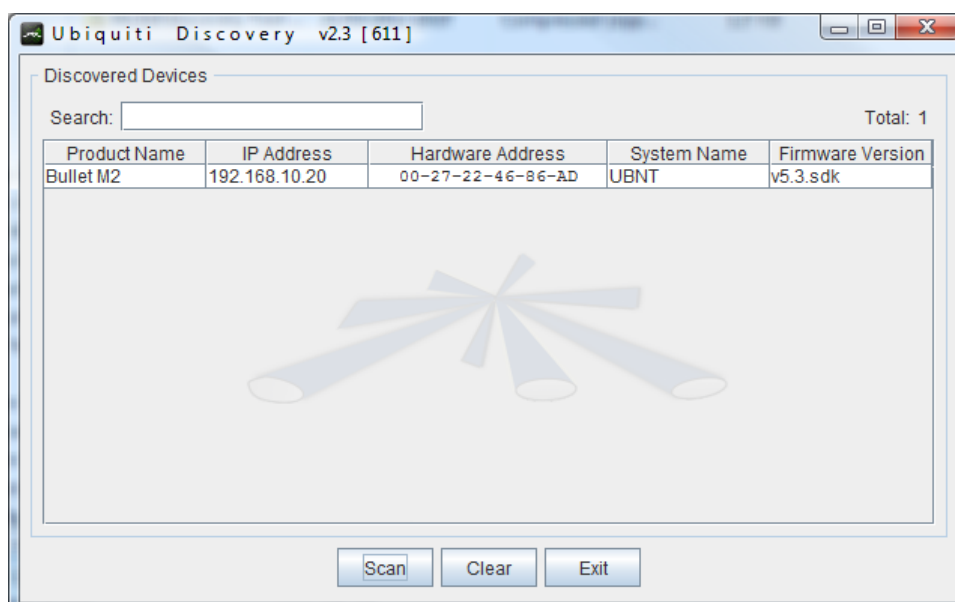


Figure 1

Right click your mouse on where it says “Bullet M2” and then select the **Details** option. You should now see the window in Fig 2.

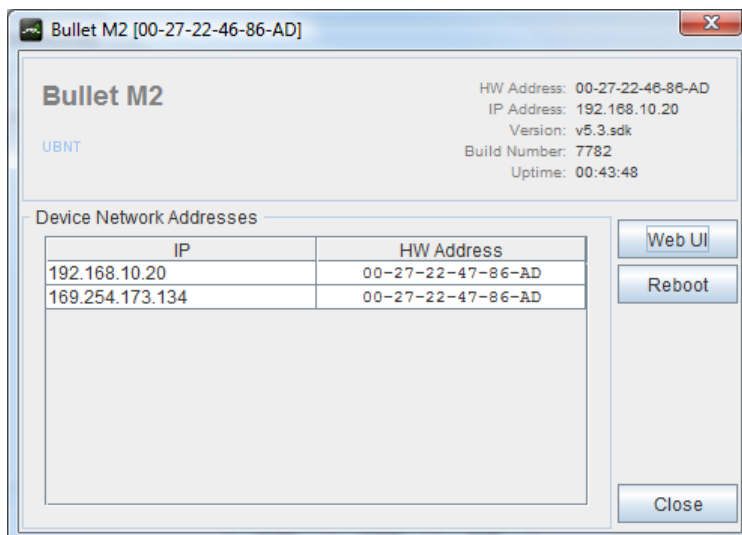


Figure 2

Select the lower IP address that starts 169.254.xxx.xxx and click on the “**Web UI**” button. This should take you to the normal log in screen of the WL510 and once logged in you can click on the “Reset to Defaults” button on the Status Tab.

You should now have everything back to normal. However, if you have one of the WL510 units produced towards the end of 2012, that has the Ubiquiti rather than Digital Yacht home page, please contact support@digitalyacht.co.uk for a configuration file to complete the process.

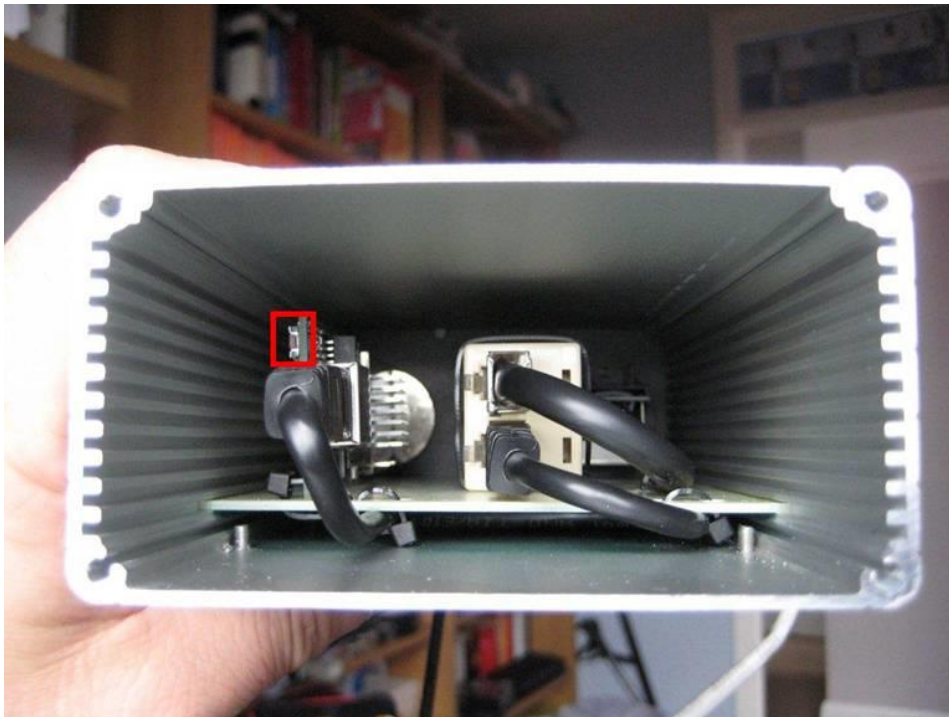
In extreme cases it may be necessary to open the WL510 system unit and press the internal reset button. The following procedure should be followed in these cases.

Hardware Reset;

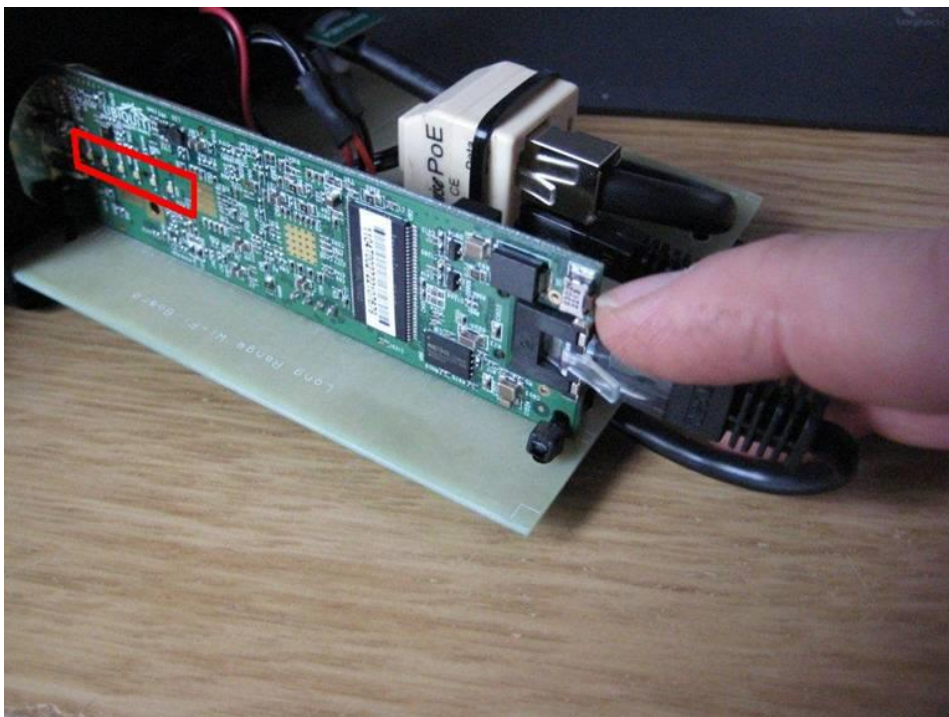
Carefully unscrew the four black screws and remove the plain end cap of the WL510...



Once the end cap is removed look in to the unit and locate the Reset switch, as highlighted in the red box....



This second picture shows the six LEDs on the PCB (red box) and my finger pressing the reset switch....



With the WL510 powered up and the end cap removed, press and hold the reset switch for at least 15 seconds. You should see the reflection of the LEDs on the left hand wall of the aluminium enclosure and normally there are a couple of green LEDs lit and during the 15 seconds you should see all six LEDs flash on, keep holding the reset button in for another few seconds and then release.

You should now wait for about 20-30 seconds for the WL510 to reboot and then re-connect to your PC or router via the network cable. Now your PC or the router should get a valid IP address from the WL510 and you should then be able to go to 192.168.10.20 in your browser and log in to the WL510 as normal.